



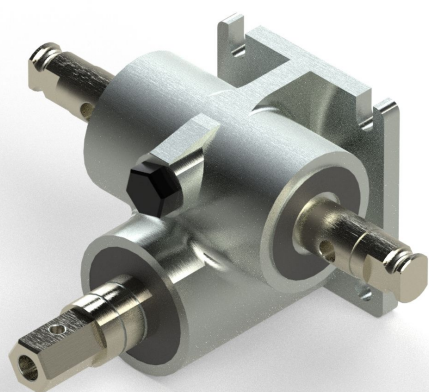
TGU GmbH & Co. KG
Joseph-Monier Str. 2 48268
Greven

Tel.: 02575 - 955 87 0 Fax: HandelsregisterAmtsgericht
Steinfurt, HRB 31 56
02575 - 955 87 87 email: Gerichtsstand Steinfurt
info@tgu-greven.com Erfüllungsort Greven DE
125 543 036

Overview

Manual Gear R9E-TGU for small application - with locking device - 1:8

Product number: 25000507



Description

- **Application:** Manual operation of shading and ventilation systems
- **Material:** Durable steel construction for high stability and longevity
- **Gear ratio:** 1:8 – enables precise control with minimal effort
- **Installation:** Directly mountable to TGU telescopic shafts or drive shafts

The **Manual Drive R9E-TGU for Small Applications** offers a dependable solution for manually controlling greenhouse shading and ventilation systems. Its robust steel design ensures high stability and long service life.

Erstellt am 10.09.2025.

Dieses Dokument stellt kein Angebot da. Es gelten die aktuellen Preise im Online-Shop.

* Our offers are directed exclusively to companies. We do not conclude contracts with consumers. All prices excl. VAT plus shipping costs and possible delivery charges, if not stated otherwise.



TGU GmbH & Co. KG

Joseph-Monier Str. 2 48268
Greven

Tel.: 02575 - 955 87 0 Fax: HandelsregisterAmtsgericht

02575 - 955 87 87 email:

info@tgu-greven.com

Steinfurt, HRB 31 56

Gerichtsstand Steinfurt

Erfüllungsort Greven DE

125 543 036

With a gear ratio of 1:8, it provides smooth and efficient operation. The drive connects directly to TGU telescopic or standard shafts for straightforward setup.