

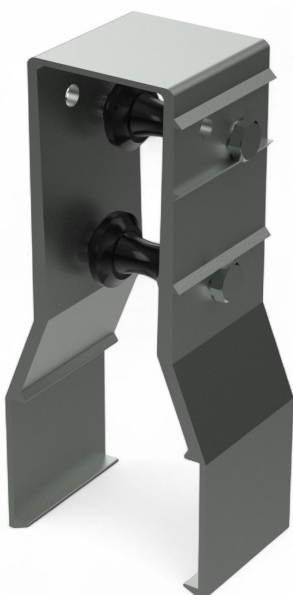
## Overview

# Roll support for push-pull tubes 60 x 40 mm

Product number: 03206040-1

## Options

### PU (Pcs)

## Description

- **Application area:** Push rod support for truss ventilation in greenhouses with trusses
- **Material:** Aluminum housing with plastic diablo rollers
- **Compatibility:** Suitable for trusses with a strap dimension of 60 x 40 mm
- **Pipe sizes:** Compatible with 27 mm and 32 mm pipes
- **Installation:** Simple push-on mounting onto the truss profile

The **Roller housing 60x40** serves as a reliable push rod support for truss ventilation in greenhouses with trusses. It is compatible with trusses measuring 60 x 40 mm and is simply pushed onto the profile.

Thanks to its flexible diablo rollers, the housing accommodates pipes of different diameters (27 mm and 32 mm). The robust aluminum and plastic construction ensures long-lasting and stable performance.

Erstellt am 14.12.2025.

Dieses Dokument stellt kein Angebot da. Es gelten die aktuellen Preise im Online-Shop.

\* Our offers are directed exclusively to companies. We do not conclude contracts with consumers. All prices excl. VAT plus shipping costs and possible delivery charges, if not stated otherwise.