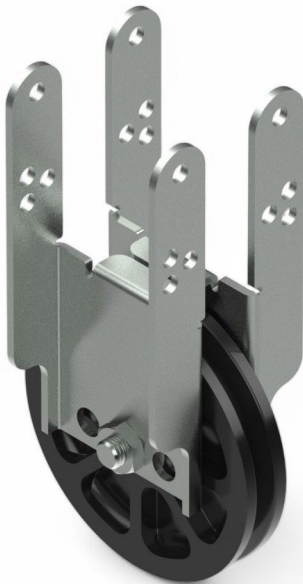


Overview

Cable pulley 100 mm H with universal clamp 60 x 60 - PU = 20 pcs

Product number: 25250077-1



Options

PU (Pcs)

Description

The 100 mm pulley can be mounted on the rear side of square tubes in the shading system. Its axle position can be adjusted to one of three different heights using the three holes in the steel bracket.

The 100 mm **H** pulley is pre-mounted for **rear mounting**. Front or under mounting is also possible if the axle position of the pulley is changed.

Suitable for wire ropes up to 3 mm in diameter.
Fits the following square tubes: 60 x 60

Material:
Pulley: impact-resistant plastic

Erstellt am 26.06.2025.

Dieses Dokument stellt kein Angebot da. Es gelten die aktuellen Preise im Online-Shop.

* Our offers are directed exclusively to companies. We do not conclude contracts with consumers. All prices excl. VAT plus shipping costs and possible delivery charges, if not stated otherwise.



TGU GmbH & Co. KG
Joseph-Monier Str. 2 48268
Greven

Tel.: 02575 - 955 87 0 Fax:
02575 - 955 87 87 email:
info@tgu-greven.com

HandelsregisterAmtsgericht
Steinfurt, HRB 31 56
Gerichtsstand Steinfurt
Erfüllungsort Greven DE
125 543 036

Bracket: galvanized steel

Erstellt am 26.06.2025.

Dieses Dokument stellt kein Angebot da. Es gelten die aktuellen Preise im Online-Shop.

* Our offers are directed exclusively to companies. We do not conclude contracts with consumers. All prices excl. VAT plus shipping costs and possible delivery charges, if not stated otherwise.