



TGU GmbH & Co. KG
Joseph-Monier-Str. 2
48268 Greven
Deutschland

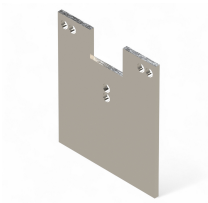
Kontakt:
Telefon: +49 2575/95587-
15
Fax: +49 2575/95587-87
E-Mail: info@tgu-shop.com

Rechtliches:
Amtsgericht Ibbenbüren
USt-ID-Nr.:
DE 125543036

Overview

Mounting plate 105- 130\B163 / 413922

Product number: 32111207



Erstellt am 04.07.2026.

Dieses Dokument stellt kein Angebot da. Es gelten die aktuellen Preise im Online-Shop.

All prices excl. VAT plus shipping costs and possible delivery charges, if not stated otherwise.



TGU GmbH & Co. KG
Joseph-Monier-Str. 2
48268 Greven
Deutschland

Kontakt:
Telefon: +49 2575/95587-
15
Fax: +49 2575/95587-87
E-Mail: info@tgu-shop.com

Rechtliches:
Amtsgericht Ibbenbüren
USt-ID-Nr.:
DE 125543036

Description

- **Application:** Straight mounting plate for RW240/400/600/200 gear motors, RPG150/300/450 PolyGearbox units, RPD150/300/450 PolyDrive motor gearboxes, and RAL240 gear motors
- **Material:** Galvanized or bare steel for high stability and corrosion resistance
- **Mounting:** Can be attached using bolts or welding
- **Total length:** 496 mm
- **Length B1** (edge to center of hole): 483.5 mm
- **Special feature:** Custom lengths or configurations available on request
- **Ridder Article No.:** 413934

The **Mounting Plate 105-130 B483/BL** is a straight steel mounting plate specifically designed for use with RW240/400/600/200 gear motors, RPG PolyGearbox units, RPD PolyDrive motor gearboxes, and RAL240 gear motors. It ensures secure and stable installation in greenhouse drive systems.

Made from galvanized or untreated steel, the plate offers excellent resistance to corrosion and mechanical stress. It can be bolted or welded into place, and custom versions are available upon request to suit specific system requirements.