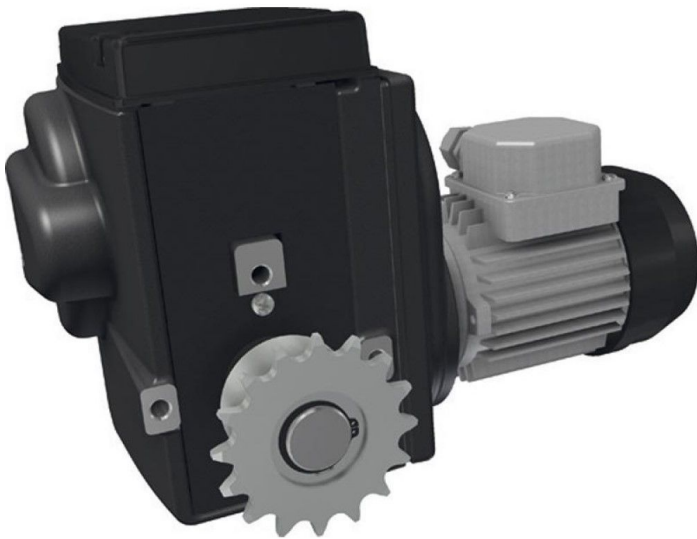


Overview

Motor Gearbox RW245- 37/400-450 Fett (Teleskop) Eco / 532259

Product number: 32535384





TGU GmbH & Co. KG
Joseph-Monier-Str. 2
48268 Greven
Deutschland

Kontakt:
Telefon: +49 2575/95587-
15
Fax: +49 2575/95587-87
E-Mail: info@tgu-shop.com

Rechtliches:
Amtsgericht Ibbenbüren
USt-ID-Nr.:
DE 125543036

Description

- **Application:** Maintenance-free gear motor for ventilation, screen, and lifting systems in greenhouses and livestock buildings
- **Material:** Robust construction with high protection class IP55
- **Voltage:** 400–450 V, 3-phase
- **Speed:** 5 revolutions per minute
- **Limit Switch:** Patented linear limit switch system with high switching accuracy
- **Temperature Range:** Suitable for ambient temperatures from 0–60 °C
- **Feature:** Low-noise operation through optimized gear and worm drive; output shaft compatible with Tower Roller Plus and telescopic systems
- **Ridder Item No.:** 532259

The **Ridder RW245-37/400-450 Grease Drive** is a maintenance-free gear motor designed for ventilation, screen, and lifting systems in greenhouses and livestock facilities. Its robust IP55-rated housing ensures reliable protection against dust and water, even in demanding environments.

Operating at 400–450 V and a constant speed of 5 revolutions per minute, the RW245-37 enables precise and dependable motion control. The patented linear limit switch system ensures accurate shaft positioning and high switching precision.

The optimized gear and worm drive combination allows for quiet operation and secure self-locking when stationary. The **output shaft** is specifically designed for direct compatibility with **Tower Roller Plus** and **telescopic systems**, eliminating the need for mechanical adaptations.

Optionally, the drive position can be transmitted to a climate computer via the RPU PositioningUnit or a potentiometer kit.