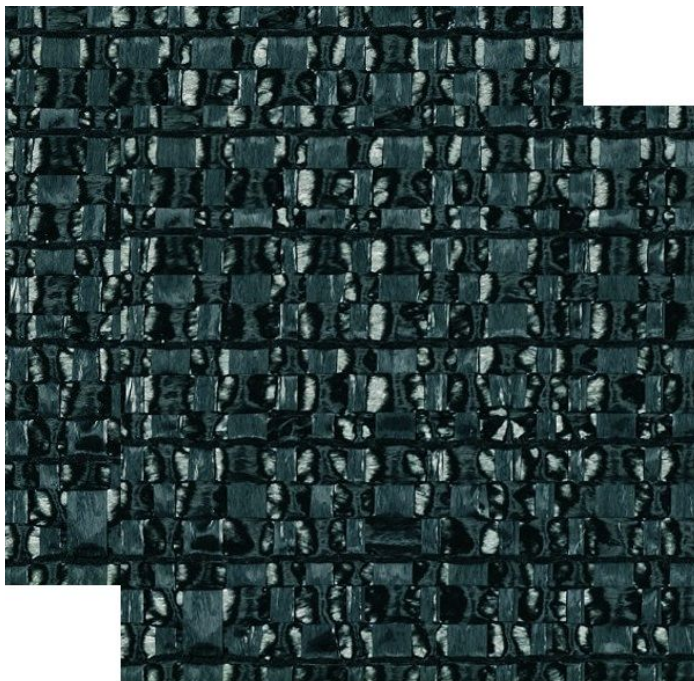


Overview

PH1 - FP Darkening Screen, double black - 480 cm

Product number: 19001102



Options

Width (cm):

 400 430 480 530



TGU GmbH & Co. KG
Joseph-Monier-Str. 2
48268 Greven
Deutschland

Kontakt:
Telefon: +49 2575/95587-
15
Fax: +49 2575/95587-87
E-Mail: info@tgu-shop.com

Rechtliches:
Amtsgericht Ibbenbüren
USt-ID-Nr.:
DE 125543036

Description

- **Application:** Fully darkening woven fabric for horizontal and suspended blackout screens
- **Structure:** Two-ply design ensures reliable shading
- **Material:** Double black woven textile layers
- **Width:** 480 cm
- **Mounting:** Suitable for hanging systems - can be finished with curtain tape

PH1-FP Blackout Woven Fabric Double - 400 cm delivers robust light exclusion with added width. Thanks to its dual-layer composition, it prevents light penetration even in demanding greenhouse or partitioning applications.

Tailored for suspended system use, the fabric is adaptable to custom-made installations with optional sewing configurations.

Product information

Flame retardant (DIN 4102 B1):	No
---------------------------------------	----