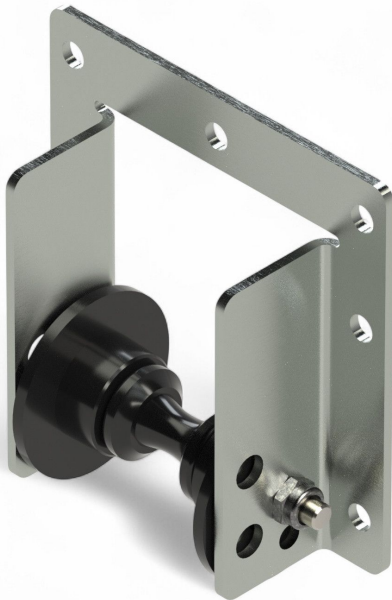


Overview

Diaboloroll 27.32 - with stamped metal bracket sideguides - PU = 50 pcs

Product number: 04200300



Options

PU (Pcs)



TGU GmbH & Co. KG
Joseph-Monier-Str. 2
48268 Greven
Deutschland

Kontakt:
Telefon: +49 2575/95587-
15
Fax: +49 2575/95587-87
E-Mail: info@tgu-shop.com

Rechtliches:
Amtsgericht Ibbenbüren
USt-ID-Nr.:
DE 125543036

Description

- **Application:** Guiding push rods in shading systems with push-drive mechanisms
- **Material:** Plastic diabolo roller with zinc-coated steel housing
- **Side Guidance:** Integrated side disc for optimal push rod alignment
- **Packaging Unit:** 50 pcs

Diaboloroll 27.32 with Stamped Steel Housing and Side Guide is tailored for greenhouse shading systems utilizing push rod drives. It ensures precise guidance and smooth movement of rods through consistent lateral alignment.

The built-in side disc helps maintain correct positioning of the push rod, ensuring stable and reliable operation. The rugged stamped steel housing adds durability and resistance in demanding greenhouse environments.