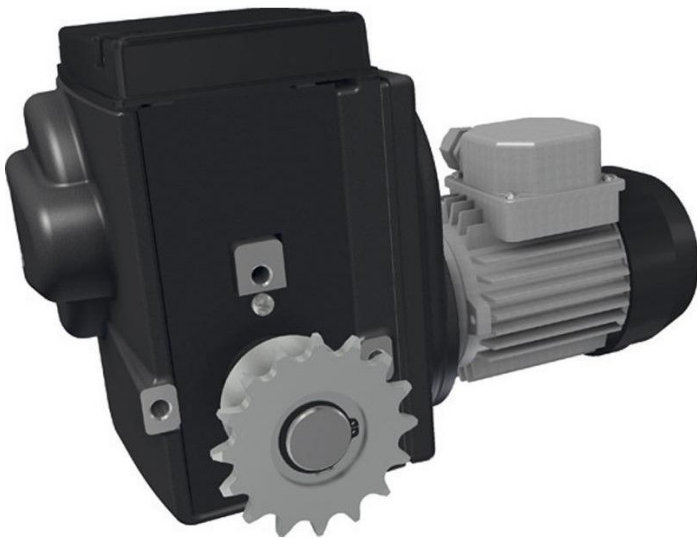


## Overview

# Motor gearbox Ridder RW 241-09/400/3/86//IP55

Product number: 32035227





TGU GmbH & Co. KG  
Joseph-Monier-Str. 2  
48268 Greven  
Deutschland

Kontakt:  
Telefon: +49 2575/95587-  
15  
Fax: +49 2575/95587-87  
E-Mail: info@tgu-shop.com

Rechtliches:  
Amtsgericht Ibbenbüren  
USt-ID-Nr.:  
DE 125543036

## Description

- **Application:** Drive unit for ventilation, screen, and lifting systems in greenhouses and barns
- **Voltage:** 400 V, 3~, 50 Hz
- **Switching range:** Integrated linear limit switch system with a switching range of 86 turns
- **Protection class:** IP55 – dust and water jet resistant
- **Limit switch:** Patented linear limit switch system with high switching precision
- **Features:**
  - Self-locking worm gear for secure shaft position at standstill
  - Maintenance-free and compact design
  - Suitable for ambient temperatures from 0–60 °C
  - Optional: RPU PositioningUnit or potentiometer feedback
- **Ridder Article No.:** 537200

The **RW 241-09 / 400 V** is a compact, maintenance-free gear motor for greenhouse ventilation, shading, and lifting systems. Its IP55 protection and self-locking worm gear ensure safe operation even in demanding environments. The integrated linear limit switch system allows precise control over up to 86 shaft revolutions.