



TGU GmbH & Co. KG
Joseph-Monier-Str. 2
48268 Greven
Deutschland

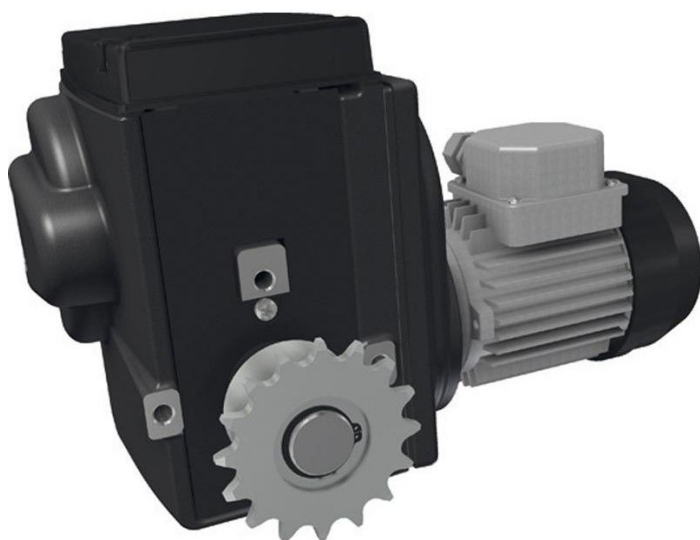
Kontakt:
Telefon: +49 2575/95587-
15
Fax: +49 2575/95587-87
E-Mail: info@tgu-shop.com

Rechtliches:
Amtsgericht Ibbenbüren
USt-ID-Nr.:
DE 125543036

Overview

Motor gearbox Ridder RW 245-37\110-115

Product number: 32035224



Erstellt am 20.04.2026.

Dieses Dokument stellt kein Angebot da. Es gelten die aktuellen Preise im Online-Shop.

All prices excl. VAT plus shipping costs and possible delivery charges, if not stated otherwise.



TGU GmbH & Co. KG
Joseph-Monier-Str. 2
48268 Greven
Deutschland

Kontakt:
Telefon: +49 2575/95587-
15
Fax: +49 2575/95587-87
E-Mail: info@tgu-shop.com

Rechtliches:
Amtsgericht Ibbenbüren
USt-ID-Nr.:
DE 125543036

Description

- **Application:** Drive unit for ventilation, screen, and lifting systems in greenhouses and barns
- **Voltage:** 110-115 V, 1~, 50/60 Hz
- **Limit switch:** Patented linear limit switch system with operating and safety switches
- **Switching range:** Integrated linear limit switch system with a switching range of 86 turns
- **Features:**
 - Self-locking worm gear for secure shaft position at standstill
 - Quiet operation through optimized gear and worm combinations
 - IP55 housing with sealed limit switch system
 - Graphite-grey powder coating for high corrosion resistance
 - Includes mounting bolts and spring washers
- **Ridder Article No.:** 502351

The **RW 245-37 / 110-115 V** is a powerful and maintenance-free gear motor for greenhouse applications. Its patented linear limit switch system allows precise control, and the self-locking worm gear ensures safety and reliability. Ideal for ventilation, shading, and lifting systems.