



TGU GmbH & Co. KG
Joseph-Monier-Str. 2
48268 Greven
Deutschland

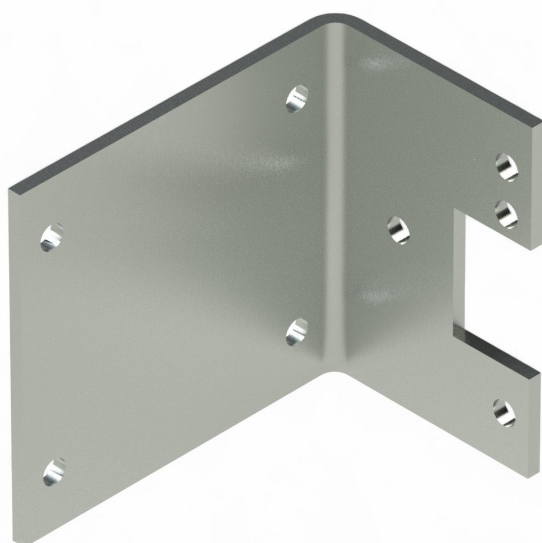
Kontakt:
Telefon: +49 2575/95587-
15
Fax: +49 2575/95587-87
E-Mail: info@tgu-shop.com

Rechtliches:
Amtsgericht Ibbenbüren
USt-ID-Nr.:
DE 125543036

Overview

Mounting plate 85- 105/H90 / 417636

Product number: 32111203



Erstellt am 20.04.2026.

Dieses Dokument stellt kein Angebot da. Es gelten die aktuellen Preise im Online-Shop.

All prices excl. VAT plus shipping costs and possible delivery charges, if not stated otherwise.



TGU GmbH & Co. KG
Joseph-Monier-Str. 2
48268 Greven
Deutschland

Kontakt:
Telefon: +49 2575/95587-
15
Fax: +49 2575/95587-87
E-Mail: info@tgu-shop.com

Rechtliches:
Amtsgericht Ibbenbüren
USt-ID-Nr.:
DE 125543036

Description

- **Application:** Angled mounting plate for RW45, RW240, RW400, RW600, and RAL120/90/60/240 gear motors
- **Material:** Galvanized steel
- **Mounting:** Bolt-on or weld-on installation
- **Special feature:** Custom lengths available on request
- **Height:** 90 mm
- **Ridder Article No.:** 417636

The **Mounting Plate 85-105 H90** is a versatile angled plate for a wide range of Ridder gear motors. It offers flexible mounting options and high corrosion resistance, making it suitable for demanding greenhouse environments.