



TGU GmbH & Co. KG
Joseph-Monier-Str. 2
48268 Greven
Deutschland

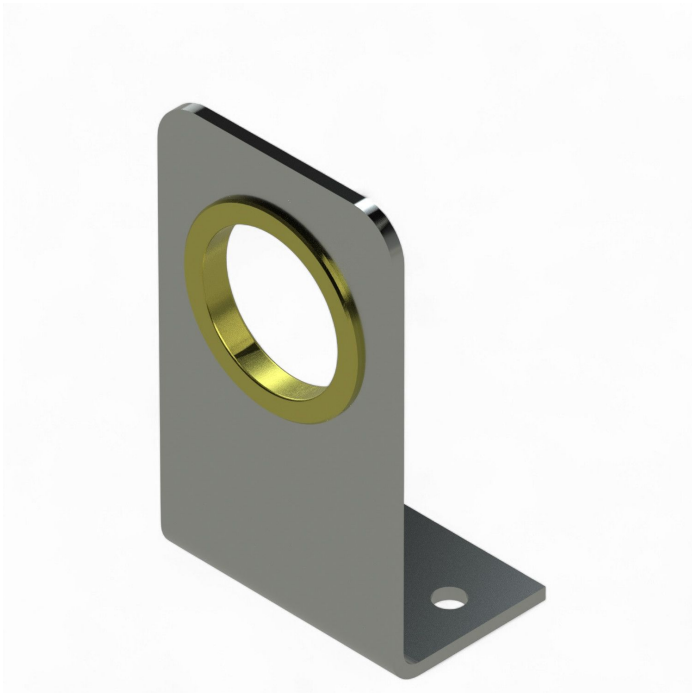
Kontakt:
Telefon: +49 2575/95587-
15
Fax: +49 2575/95587-87
E-Mail: info@tgu-shop.com

Rechtliches:
Amtsgericht Ibbenbüren
USt-ID-Nr.:
DE 125543036

Overview

Alu-Support plate 40

Product number: 24100603



Erstellt am 20.04.2026.

Dieses Dokument stellt kein Angebot da. Es gelten die aktuellen Preise im Online-Shop.

All prices excl. VAT plus shipping costs and possible delivery charges, if not stated otherwise.



TGU GmbH & Co. KG
Joseph-Monier-Str. 2
48268 Greven
Deutschland

Kontakt:
Telefon: +49 2575/95587-
15
Fax: +49 2575/95587-87
E-Mail: info@tgu-shop.com

Rechtliches:
Amtsgericht Ibbenbüren
USt-ID-Nr.:
DE 125543036

Description

- **Application:** Support plate for fastening drive shafts in shading systems
- **Material:** Aluminum for high stability and corrosion resistance
- **Mounting:** Angled shape ensures secure attachment to structural elements
- **Height:** Center of pipe: 40 mm
- **Special feature:** Lightweight design for easy installation

The **Angled Aluminum Support Plate 1"** offers a reliable solution for mounting drive shafts in greenhouse shading systems. Its angled shape ensures a stable and secure installation.

The high-grade aluminum provides excellent resistance to environmental conditions and long service life. Ideal for professional greenhouse applications, it enhances the efficiency and durability of shading structures.