

Overview

Tube motor support on 50.50 square tubes for RB120 - 16x16 mm

Product number: 25250022

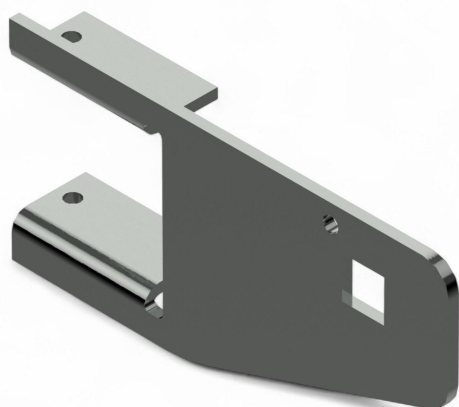
Options

Version

E+

RB50 / FRM 50

RB120





TGU GmbH & Co. KG
Joseph-Monier-Str. 2
48268 Greven
Deutschland

Kontakt:
Telefon: +49 2575/95587-
15
Fax: +49 2575/95587-87
E-Mail: info@tgu-shop.com

Rechtliches:
Amtsgericht Ibbenbüren
USt-ID-Nr.:
DE 125543036

Description

- **Application:** Shaft support for suspended shading systems with gable drive
- **Material:** Hot-dip galvanized steel for high durability
- **Installation:** Square tubes are flanged directly onto the motor support
- **Special feature:** Simplifies installation by eliminating manual shaft alignment
- **Compatibility:** Suitable for RB 120 tube motors
- **Scope of delivery:** Bolts and nuts not included

The **Tube Motor Support for RB120 - 16x16 mm** is designed for gable-end suspended shading systems. It allows square tubes to be mounted directly, ensuring accurate shaft positioning and reducing installation effort. The galvanized steel build offers excellent resistance to wear and environmental conditions.