



TGU GmbH & Co. KG
Joseph-Monier-Str. 2
48268 Greven
Deutschland

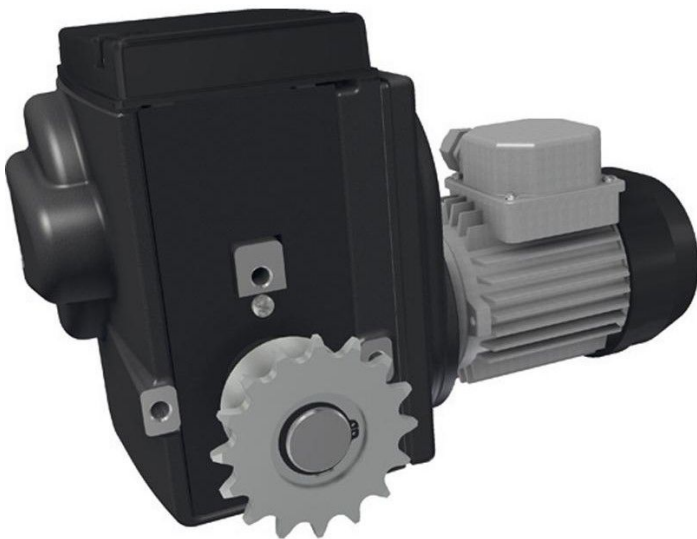
Kontakt:
Telefon: +49 2575/95587-
15
Fax: +49 2575/95587-87
E-Mail: info@tgu-shop.com

Rechtliches:
Amtsgericht Ibbenbüren
USt-ID-Nr.:
DE 125543036

Overview

Motor gearbox RW 243 400-460Volt/3-Phase/3 rpm

Product number: 32435381



Erstellt am 21.04.2026.

Dieses Dokument stellt kein Angebot da. Es gelten die aktuellen Preise im Online-Shop.

All prices excl. VAT plus shipping costs and possible delivery charges, if not stated otherwise.



TGU GmbH & Co. KG
Joseph-Monier-Str. 2
48268 Greven
Deutschland

Kontakt:
Telefon: +49 2575/95587-
15
Fax: +49 2575/95587-87
E-Mail: info@tgu-shop.com

Rechtliches:
Amtsgericht Ibbenbüren
USt-ID-Nr.:
DE 125543036

Description

- **Application:** Compact drive for ventilation, shading, and lifting systems in greenhouses and livestock buildings
- **Voltage:** 400-450 V, 3-phase
- **Speed:** 3 rpm
- **Protection class:** IP55 – dust and water resistant
- **End switch:** Integrated linear limit switch system with high switching precision
- **Temperature range:** 0-60 °C
- **Features:** Self-locking worm gear, quiet operation, optional RPU PositioningUnit or potentiometer kit
- **Ridder Article No.:** 502310

The **RW243 motor gearbox** is a compact and powerful solution for greenhouse automation. Its robust design and precise switching system make it ideal for long-term use in harsh environments.