



TGU GmbH & Co. KG
Joseph-Monier-Str. 2
48268 Greven
Deutschland

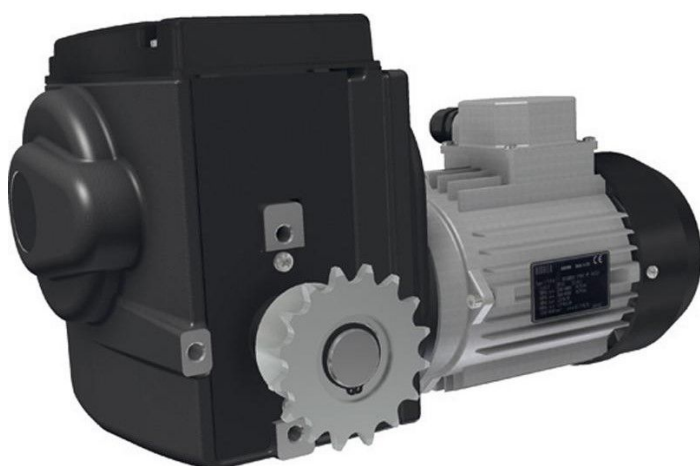
Kontakt:
Telefon: +49 2575/95587-
15
Fax: +49 2575/95587-87
E-Mail: info@tgu-shop.com

Rechtliches:
Amtsgericht Ibbenbüren
USt-ID-Nr.:
DE 125543036

Overview

Motor gearbox Ridder RW403\400-450 Volt - 400- 450 V - 3 Phase / 3 rpm - Ridder Art.-Nr.: 502210

Product number: 32535381



Erstellt am 21.04.2026.

Dieses Dokument stellt kein Angebot da. Es gelten die aktuellen Preise im Online-Shop.

All prices excl. VAT plus shipping costs and possible delivery charges, if not stated otherwise.



TGU GmbH & Co. KG
Joseph-Monier-Str. 2
48268 Greven
Deutschland

Kontakt:
Telefon: +49 2575/95587-
15
Fax: +49 2575/95587-87
E-Mail: info@tgu-shop.com

Rechtliches:
Amtsgericht Ibbenbüren
USt-ID-Nr.:
DE 125543036

Description

- **Application:** Drive unit for ventilation, shading, and lifting systems in greenhouses or livestock buildings
- **Voltage:** 400-450 V, 3-phase
- **Speed:** 3 rpm
- **Protection class:** IP55 - sealed housing with linear limit switch system
- **End switch:** Built-in linear system with operating and safety switches (max. 86 turns)
- **Features:** Self-locking worm gear, quiet operation, graphite-grey powder coating
- **Optional:** RPU PositioningUnit or potentiometer feedback kit
- **Ridder Article No.:** 502210

The **RW403 motor gearbox** is a reliable and quiet drive solution for greenhouse systems. Its integrated switching system ensures precise control and long service life.