

Overview

Guide rail for tube motor 7000 mm

Product number: 33100107

Options

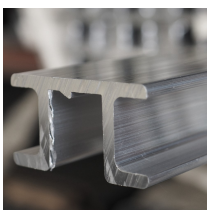
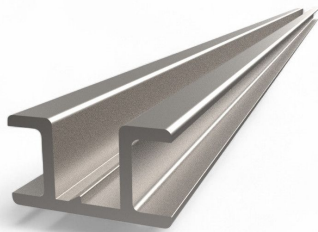
Length (mm)

4000

5000

6000

7000





TGU GmbH & Co. KG
Joseph-Monier-Str. 2
48268 Greven
Deutschland

Kontakt:
Telefon: +49 2575/95587-
15
Fax: +49 2575/95587-87
E-Mail: info@tgu-shop.com

Rechtliches:
Amtsgericht Ibbenbüren
USt-ID-Nr.:
DE 125543036

Description

- **Application:** Ensures straight vertical guidance of tubular motors in roll-up systems
- **Length:** 7000 mm
- **Material:** High-strength aluminum profile
- **Compatibility:** Used in combination with TGU roller carriage
- **Mounting:** For vertical installations in greenhouses

The **Guide rail for tube motor 7000 mm** is the longest standard profile for vertical roll-up systems. It ensures smooth and accurate movement of the tube motor when paired with a roller carriage. Ideal for large-scale greenhouse installations.