



TGU GmbH & Co. KG
Joseph-Monier-Str. 2
48268 Greven
Deutschland

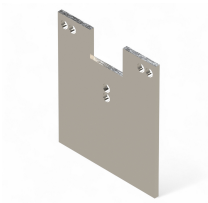
Kontakt:
Telefon: +49 2575/95587-
15
Fax: +49 2575/95587-87
E-Mail: info@tgu-shop.com

Rechtliches:
Amtsgericht Ibbenbüren
USt-ID-Nr.:
DE 125543036

Overview

Mounting plate 105- 130\B163 / 413922

Product number: 32111201



Erstellt am 20.04.2026.

Dieses Dokument stellt kein Angebot da. Es gelten die aktuellen Preise im Online-Shop.

All prices excl. VAT plus shipping costs and possible delivery charges, if not stated otherwise.



TGU GmbH & Co. KG
Joseph-Monier-Str. 2
48268 Greven
Deutschland

Kontakt:
Telefon: +49 2575/95587-
15
Fax: +49 2575/95587-87
E-Mail: info@tgu-shop.com

Rechtliches:
Amtsgericht Ibbenbüren
USt-ID-Nr.:
DE 125543036

Description

- **Application:** Straight mounting plate for RW240/400/600/200 gear motors, RPG150/300/450 PolyGearbox units, RPD150/300/450 PolyDrive motor gearboxes, and RAL240 gear motors
- **Material:** Galvanized or bare steel for high stability and corrosion resistance
- **Mounting:** Can be attached using bolts or welding
- **Total length:** 175.5 mm
- **Length B1** (edge to center of hole): 163 mm
- **Special feature:** Custom lengths or configurations available on request
- **Ridder Article No.:** 413922

The **Mounting Plate 105-130 B163** is a straight steel mounting plate specifically designed for RW240/400/600/200 gear motors, RPG PolyGearbox units, RPD PolyDrive motor gearboxes, and RAL240 gear motors. It ensures secure and stable installation and can be either bolted or welded into place.

Thanks to its galvanized or untreated steel construction, the plate offers excellent resistance to corrosion and mechanical stress. Custom lengths or special versions are available on request to ensure optimal compatibility with various systems.