



TGU GmbH & Co. KG
Joseph-Monier-Str. 2
48268 Greven
Deutschland

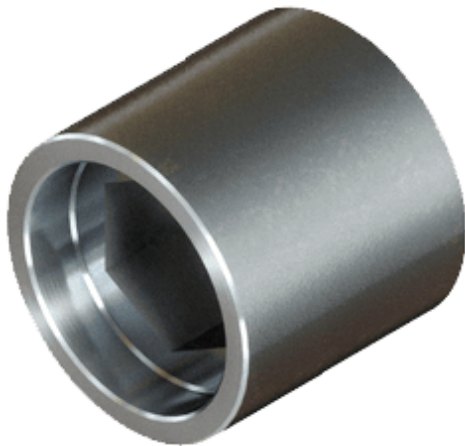
Kontakt:
Telefon: +49 2575/95587-
15
Fax: +49 2575/95587-87
E-Mail: info@tgu-shop.com

Rechtliches:
Amtsgericht Ibbenbüren
USt-ID-Nr.:
DE 125543036

Overview

Lock weld coupling SKS 201

Product number: 31150201



Options

Version

SKS 201

Erstellt am 20.04.2026.

Dieses Dokument stellt kein Angebot da. Es gelten die aktuellen Preise im Online-Shop.

All prices excl. VAT plus shipping costs and possible delivery charges, if not stated otherwise.



TGU GmbH & Co. KG
Joseph-Monier-Str. 2
48268 Greven
Deutschland

Kontakt:
Telefon: +49 2575/95587-
15
Fax: +49 2575/95587-87
E-Mail: info@tgu-shop.com

Rechtliches:
Amtsgericht Ibbenbüren
USt-ID-Nr.:
DE 125543036

Description

- **Application:** Transmission of drive torque between gearboxes
- **Design:** No angular compensation - axial locking on one side
- **Material:** Weldable steel, untreated
- **Installation:** Welded to the ends of custom connection pipes and pushed onto the gearbox shaft
- **Note:** Connection pipe and SKS must be aligned - allow approx. 3 mm expansion between coupling and shaft

The **Lock Welded Coupling SKS 201** is used to transfer torque between gearboxes in greenhouse drive systems. It is welded to the ends of custom connection pipes and pushed onto the gearbox shaft. The coupling features axial locking and must be aligned precisely during installation. A small expansion gap should be considered to ensure proper function.