



TGU GmbH & Co. KG
Joseph-Monier-Str. 2
48268 Greven
Deutschland

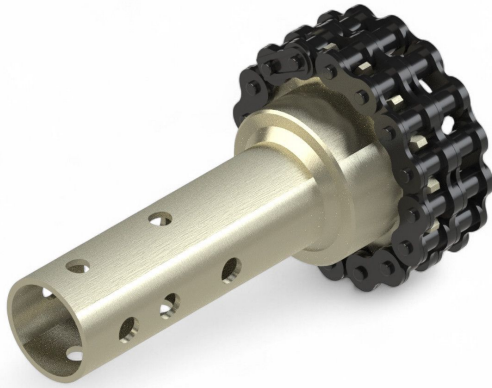
Kontakt:
Telefon: +49 2575/95587-
15
Fax: +49 2575/95587-87
E-Mail: info@tgu-shop.com

Rechtliches:
Amtsgericht Ibbenbüren
USt-ID-Nr.:
DE 125543036

Overview

Bolted chain coupling for RW45 - tube

Product number: 37037125



Erstellt am 20.04.2026.

Dieses Dokument stellt kein Angebot da. Es gelten die aktuellen Preise im Online-Shop.

All prices excl. VAT plus shipping costs and possible delivery charges, if not stated otherwise.



TGU GmbH & Co. KG
Joseph-Monier-Str. 2
48268 Greven
Deutschland

Kontakt:
Telefon: +49 2575/95587-
15
Fax: +49 2575/95587-87
E-Mail: info@tgu-shop.com

Rechtliches:
Amtsgericht Ibbenbüren
USt-ID-Nr.:
DE 125543036

Description

- **Application:** Connects the chain wheel of RW45 gear motors to the drive shaft
- **Tube size:** 1¼"
- **Material:** Galvanized steel
- **Mounting:** Bolted design with pre-punched receptacle for easy installation
- **Features:** Duplex chain allows axial movement of the shaft for greater flexibility

The **Bolted chain coupling for RW45 - 1¼" tube** is used to connect Ridder RW45 gear motors to larger drive shafts. It offers the same easy installation and flexibility as the 1" version, with a larger bore for 1¼" tubing. Ideal for dynamic greenhouse environments.