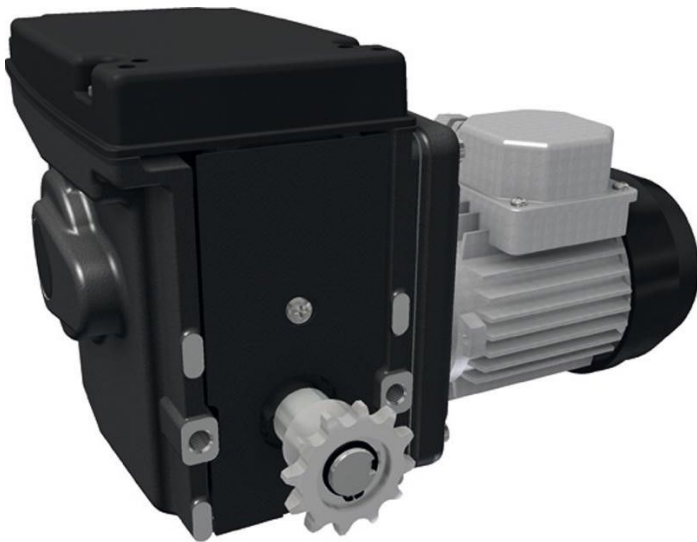


Overview

Motor gearbox Ridder RW 45-1-09\230\1\97

Product number: 32035228





TGU GmbH & Co. KG
Joseph-Monier-Str. 2
48268 Greven
Deutschland

Kontakt:
Telefon: +49 2575/95587-
15
Fax: +49 2575/95587-87
E-Mail: info@tgu-shop.com

Rechtliches:
Amtsgericht Ibbenbüren
USt-ID-Nr.:
DE 125543036

Description

- **Application:** Drive unit for horizontal shading and ventilation systems
- **Voltage:** 230 V, 1~, 50 Hz
- **Switching range:** Integrated linear limit switch system with a switching range of 86 turns
- **Limit switch:** Integrated linear limit switch system
- **Features:**
 - Self-locking worm gear for secure shaft position at standstill
 - Quiet and compact design
 - Delivered with pre-installed chain wheel for chain coupling
 - Optional: RPU PositioningUnit or potentiometer feedback
- **Ridder Article No.:** 502030

The **RW 45-1-09 / 230 V** is a single-phase gear motor for greenhouse shading and ventilation. It features a self-locking worm gear and a precise linear limit switch system. Delivered with a pre-installed chain wheel, it's ready for integration into flexible drive systems.