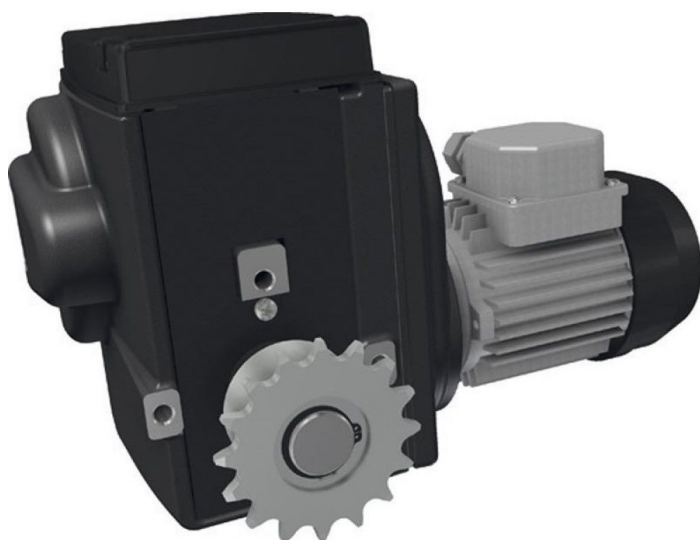


## Overview

# Motor gearbox RW 245 400-460Volt/3-Phase/3 rpm

Product number: 32435380





TGU GmbH & Co. KG  
Joseph-Monier-Str. 2  
48268 Greven  
Deutschland

Kontakt:  
Telefon: +49 2575/95587-  
15  
Fax: +49 2575/95587-87  
E-Mail: info@tgu-shop.com

Rechtliches:  
Amtsgericht Ibbenbüren  
USt-ID-Nr.:  
DE 125543036

## Description

- **Application:** Maintenance-free drive for ventilation, shading, and lifting systems in greenhouses and livestock buildings
- **Voltage:** 400-450 V, 3-phase
- **Speed:** 5 rpm
- **Protection class:** IP55 - dust and water resistant
- **End switch:** Patented linear limit switch system with high switching accuracy
- **Temperature range:** 0-60 °C
- **Features:** Quiet operation, self-locking worm gear, optional RPU PositioningUnit or potentiometer kit
- **Ridder Article No.:** 502320

The **RW245-37 motor gearbox** is a rugged, low-maintenance drive unit designed for greenhouse automation. Its precise limit switch system and quiet, self-locking transmission ensure reliable performance in demanding environments.