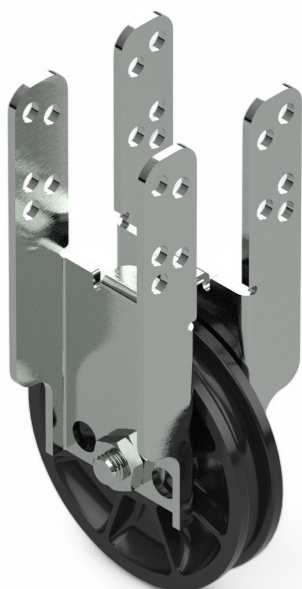


Overview

Cable pulley 90 H with universal clamp 50 x 50 - PU = 20 pcs

Product number: 25250073



Options

PU (Pcs)

Version

Image





TGU GmbH & Co. KG
Joseph-Monier-Str. 2
48268 Greven
Deutschland

Kontakt:
Telefon: +49 2575/95587-
15
Fax: +49 2575/95587-87
E-Mail: info@tgu-shop.com

Rechtliches:
Amtsgericht Ibbenbüren
USt-ID-Nr.:
DE 125543036

Description

- **Application:** Mounting on the rear side of square tubes in shading systems
- **Material:** Pulley: impact-resistant plastic - Bracket: galvanized steel
- **Installation:** Axle position adjustable in three heights via bracket holes
- **Compatibility:** Fits square tubes: 50×50, 50×55, 50×30, 50×25, 50×20
- **Wire diameter:** Suitable for wire ropes up to 8 mm

The **Cable Pulley 90 mm H with Universal Clamp 50×50** is designed for rear mounting on square tubes in greenhouse shading systems. Its axle can be positioned at three different heights using the bracket holes. The pulley is pre-mounted for rear installation but can be reconfigured for other mounting types. Its robust materials ensure long-term durability and reliable performance.