



TGU GmbH & Co. KG
Joseph-Monier-Str. 2
48268 Greven
Deutschland

Kontakt:
Telefon: +49 2575/95587-
15
Fax: +49 2575/95587-87
E-Mail: info@tgu-shop.com

Rechtliches:
Amtsgericht Ibbenbüren
USt-ID-Nr.:
DE 125543036

Overview

Motor mount TGU S 400.600 RW 200 - 600 for motor gearbox RW 200 - 600 (square tube Vierkantrohr 50x50) - for suspended shading systems

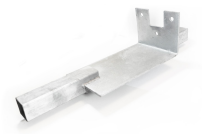
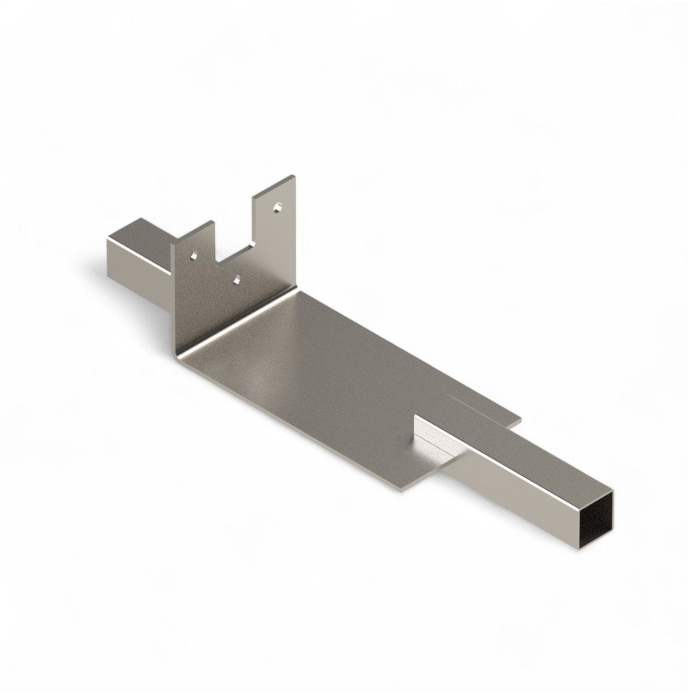
Product number: 32135500



TGU GmbH & Co. KG
Joseph-Monier-Str. 2
48268 Greven
Deutschland

Kontakt:
Telefon: +49 2575/95587-
15
Fax: +49 2575/95587-87
E-Mail: info@tgu-shop.com

Rechtliches:
Amtsgericht Ibbenbüren
USt-ID-Nr.:
DE 125543036



Erstellt am 20.04.2026.

Dieses Dokument stellt kein Angebot da. Es gelten die aktuellen Preise im Online-Shop.

All prices excl. VAT plus shipping costs and possible delivery charges, if not stated otherwise.



TGU GmbH & Co. KG
Joseph-Monier-Str. 2
48268 Greven
Deutschland

Kontakt:
Telefon: +49 2575/95587-
15
Fax: +49 2575/95587-87
E-Mail: info@tgu-shop.com

Rechtliches:
Amtsgericht Ibbenbüren
USt-ID-Nr.:
DE 125543036

Description

- **Application:** Mounting RW200, RW400, and RW600 gear motors in suspended shading systems
- **Material:** Hot-dip galvanized steel
- **Compatibility:** Square tube 50×50 mm
- **Mounting:** Square tubes are inserted directly onto the motor mount
- **Special feature:** Simplifies installation by eliminating the need to manually align the drive shaft

The **Motor Mount TGU S 400.600** is designed for suspended greenhouse shading systems. It ensures precise alignment of the drive shaft and allows for quick, tool-friendly installation. Built from galvanized steel for maximum durability.