



TGU GmbH & Co. KG
Joseph-Monier-Str. 2
48268 Greven
Deutschland

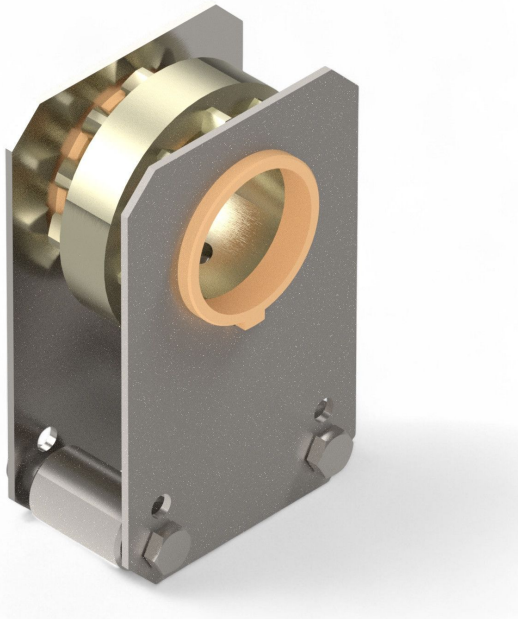
Kontakt:
Telefon: +49 2575/95587-
15
Fax: +49 2575/95587-87
E-Mail: info@tgu-shop.com

Rechtliches:
Amtsgericht Ibbenbüren
USt-ID-Nr.:
DE 125543036

Overview

Pinion house unit Ridder TU21-40 - Ridder Art.-Nr.: 500040

Product number: 32200021



Erstellt am 20.04.2026.

Dieses Dokument stellt kein Angebot da. Es gelten die aktuellen Preise im Online-Shop.

All prices excl. VAT plus shipping costs and possible delivery charges, if not stated otherwise.



TGU GmbH & Co. KG
Joseph-Monier-Str. 2
48268 Greven
Deutschland

Kontakt:
Telefon: +49 2575/95587-
15
Fax: +49 2575/95587-87
E-Mail: info@tgu-shop.com

Rechtliches:
Amtsgericht Ibbenbüren
USt-ID-Nr.:
DE 125543036

Description

- **Application:** Direct drive for shading systems with push-pull tube actuation
- **Material:** Galvanized steel
- **Gear type:** Specially hardened pinions
- **Compatibility:** Designed for use with Ridder racks H40-3
- **Mounting:** For integration into greenhouse shading systems
- **Ridder Article No.:** 500040

The **Pinion Housing TU21-40** is used as a direct drive unit in greenhouse shading systems with push-pull tubes. Its galvanized steel body and hardened pinions ensure long-lasting performance and precise motion control. Compatible with Ridder rack systems such as H40-3.