



TGU GmbH & Co. KG
Joseph-Monier-Str. 2
48268 Greven
Deutschland

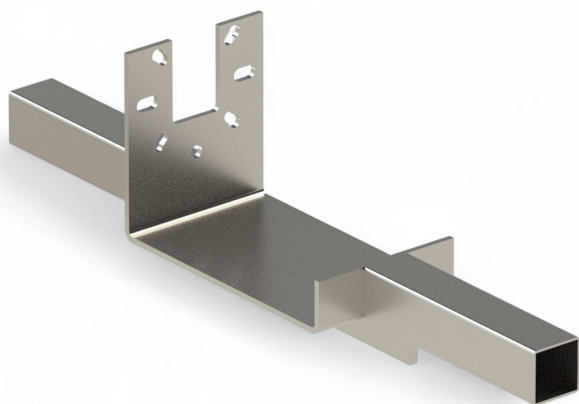
Kontakt:
Telefon: +49 2575/95587-
15
Fax: +49 2575/95587-87
E-Mail: info@tgu-shop.com

Rechtliches:
Amtsgericht Ibbenbüren
USt-ID-Nr.:
DE 125543036

Overview

Motor mount TGU RW45/200/400/600, Viale and EWA12/14 - for suspended shading systems

Product number: 32135505



Erstellt am 20.04.2026.

Dieses Dokument stellt kein Angebot da. Es gelten die aktuellen Preise im Online-Shop.

All prices excl. VAT plus shipping costs and possible delivery charges, if not stated otherwise.



TGU GmbH & Co. KG
Joseph-Monier-Str. 2
48268 Greven
Deutschland

Kontakt:
Telefon: +49 2575/95587-
15
Fax: +49 2575/95587-87
E-Mail: info@tgu-shop.com

Rechtliches:
Amtsgericht Ibbenbüren
USt-ID-Nr.:
DE 125543036

Description

- **Application:** Mounting gear motors in suspended greenhouse shading systems
- **Compatible motors:** RW45, RW200, RW400, RW600, Viale, and EWA12/14
- **Material:** Galvanized steel for high stability and corrosion resistance
- **Tube compatibility:** Square tube 50×50 mm
- **Special feature:** Simple installation and secure fastening

The **Motor Mount TGU RW45/200/400/600, Viale and EWA12/14** is designed for secure installation of gear motors in suspended shading systems. It fits square tubes 50×50 mm and ensures long-lasting, vibration-resistant mounting in greenhouse environments.