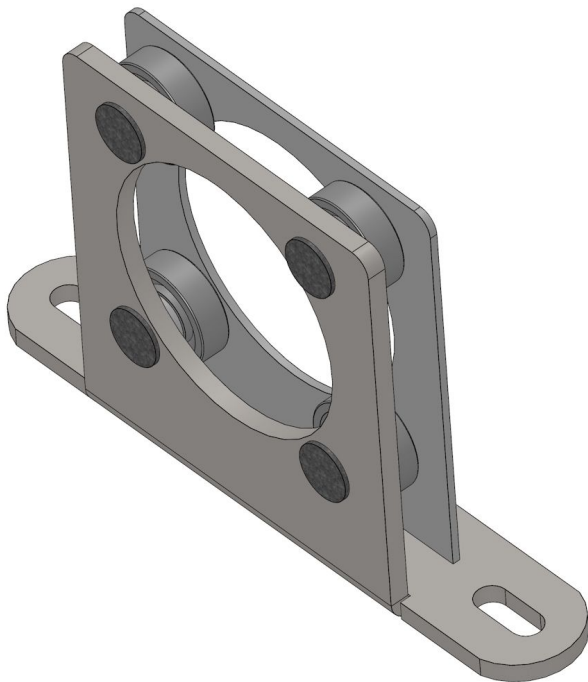


## Overview

# 4 bearing shaft support 2" short

Product number: 25100102-1



### Options

#### PU (Pcs)

#### Version

Image



TGU GmbH & Co. KG  
Joseph-Monier-Str. 2  
48268 Greven  
Deutschland

Kontakt:  
Telefon: +49 2575/95587-  
15  
Fax: +49 2575/95587-87  
E-Mail: info@tgu-shop.com

Rechtliches:  
Amtsgericht Ibbenbüren  
USt-ID-Nr.:  
DE 125543036

## Description

- **Application area:** Suitable for central drives in suspended and surface-mounted shading systems
- **Material:** Galvanized steel for high stability and corrosion resistance
- **Function:** Forms the bearing point of the drive shaft and positions it precisely within the system
- **Special feature:** Short version for 34 mm pipes

The **4 bearing shaft support 1" short** is specifically designed for central drives used in suspended and surface-mounted shading systems. It forms the bearing point of the drive shaft and ensures precise positioning within the system.

Thanks to its compact design, this bearing is especially suitable for 34 mm pipes and guarantees stable and reliable performance.

The galvanized steel construction provides high durability and corrosion resistance, making the bearing ideal for long-term use.