



TGU GmbH & Co. KG  
Joseph-Monier-Str. 2  
48268 Greven  
Deutschland

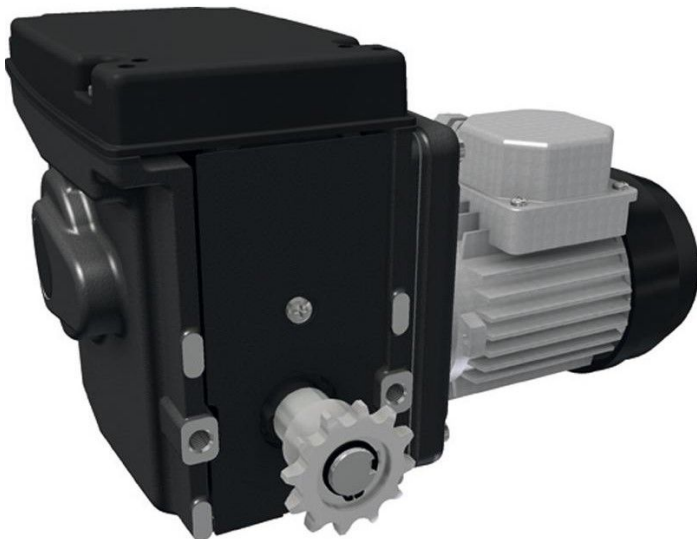
Kontakt:  
Telefon: +49 2575/95587-  
15  
Fax: +49 2575/95587-87  
E-Mail: info@tgu-shop.com

Rechtliches:  
Amtsgericht Ibbenbüren  
USt-ID-Nr.:  
DE 125543036

## Overview

# Motor gearbox RW45-5- 09\115\1\60\P\CU\97

**Product number:** 32015220



Erstellt am 21.04.2026.

Dieses Dokument stellt kein Angebot da. Es gelten die aktuellen Preise im Online-Shop.

All prices excl. VAT plus shipping costs and possible delivery charges, if not stated otherwise.



TGU GmbH & Co. KG  
Joseph-Monier-Str. 2  
48268 Greven  
Deutschland

Kontakt:  
Telefon: +49 2575/95587-  
15  
Fax: +49 2575/95587-87  
E-Mail: info@tgu-shop.com

Rechtliches:  
Amtsgericht Ibbenbüren  
USt-ID-Nr.:  
DE 125543036

## Description

- **Application:** Drive unit for ventilation and screen systems in greenhouses or barns
- **Voltage:** 100-115 V, 1~, 60 Hz
- **Speed:** 5 rpm
- **Limit switch:** Integrated linear limit switch system with a 97-turn operating range
- **Features:**
  - Self-locking worm gear for secure shaft position at standstill
  - Quiet operation due to optimized gear combinations
  - Maintenance-free and compact design
  - Optional RPU PositioningUnit or potentiometer feedback
  - Graphite-grey powder coating

The **RW45-5-09\115\1\60\P\CU\97** is a reliable gear motor for greenhouse systems operating on 115 V. It offers quiet, self-locking performance and precise limit switch control, with optional feedback integration for climate automation.