



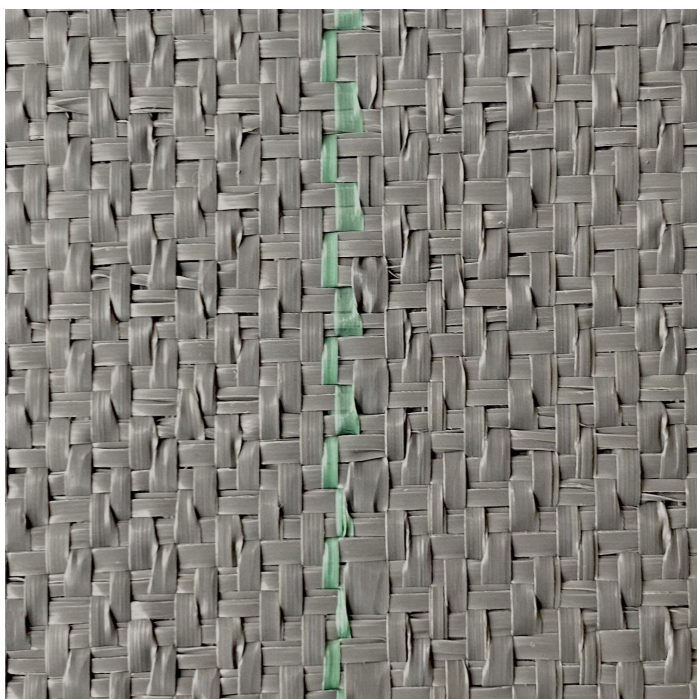
TGU GmbH & Co. KG
Joseph-Monier Str. 2 48268
Greven

Tel.: 02575 - 955 87 0 Fax: HandelsregisterAmtsgericht
Steinfurt, HRB 31 56
02575 - 955 87 87 email: Gerichtsstand Steinfurt
info@tgu-greven.com Erfüllungsort Greven DE
125 543 036

Overview

Aquatex Groundcover COOL 200 gr./m

Product number: 56620525



Options

Width (cm):

415

525

Description

Our subsoil fabric serves as a strong and flexible barrier against weeds and between soil and paved surfaces. Thanks to its grey colour, this ribbon fabric promises greater UV resistance than white fabric. Nevertheless, it offers less heat build-up and therefore less risk of burns than the black ribbon fabric.

For ground covers with ribbon fabric, it should be noted that with lava or gravel substructures, which are used for drainage, no good water drainage can be expected with standard ground fabric. The water does not drain downwards through the standard fabric, but remains on the surface as puddles. This is due to the only punctual counter-pressure of the stones from below; the surface tension of the water also has an effect on this phenomenon.

There is no problem with sand or soil substructures, i.e. flat counter-pressure from below. For this reason, the so-called K-type fabric should be used for lava/gravel substructures. Here, the weave is more open and you have perfect water drainage. The K-Type is available in 130gr and 200gr in black and 200gr in grey.

Erstellt am 27.06.2025.

Dieses Dokument stellt kein Angebot da. Es gelten die aktuellen Preise im Online-Shop.

* Our offers are directed exclusively to companies. We do not conclude contracts with consumers. All prices excl. VAT plus shipping costs and possible delivery charges, if not stated otherwise.



TGU GmbH & Co. KG

Joseph-Monier Str. 2 48268
Greven

Tel.: 02575 - 955 87 0 Fax:

02575 - 955 87 87 email:
info@tgu-greven.com

HandelsregisterAmtsgericht

Steinfurt, HRB 31 56

Gerichtsstand Steinfurt

Erfüllungsort Greven DE

125 543 036

200gr material is only available as K-Type. The more open structure not only lets water through better, but also light. This has a negative effect on weed suppression, which is why 130gr soil fabric is recommended for normal substructures and higher weed pressure. Translated with DeepL.com (free version)