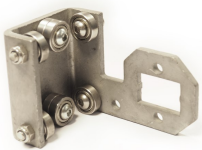
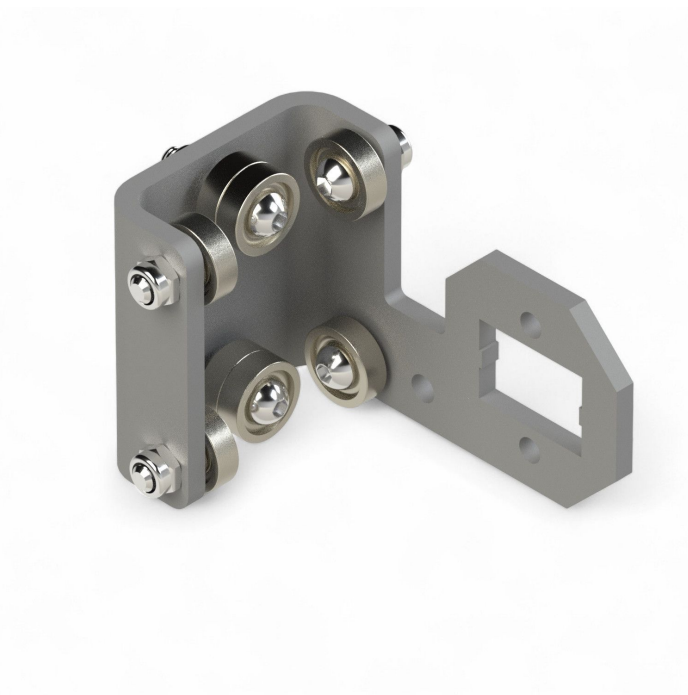


Overview

Guiding unit RB50E+\L (left)

Product number: 33100056





TGU GmbH & Co. KG
Joseph-Monier-Str. 2
48268 Greven
Deutschland

Kontakt:
Telefon: +49 2575/95587-
15
Fax: +49 2575/95587-87
E-Mail: info@tgu-shop.com

Rechtliches:
Amtsgericht Ibbenbüren
USt-ID-Nr.:
DE 125543036

Description

- **Application:** Motor guide for RB50E+ tube motors in greenhouse shading systems
- **Position:** Right-side motor mounting
- **Material:** Steel, ball-bearing mounted
- **Mounting:** Two holes for bracket attachment
- **Features:** Extended fastener fits U-profile - ensures smooth motor travel

The **Guiding unit RB50E+ L** is a precision motor carriage for Ridder RB50E+ tube motors. Designed for left-side installations, it ensures smooth and stable movement along the guide rail. Ideal for roll-up screen systems in greenhouses.