

Overview

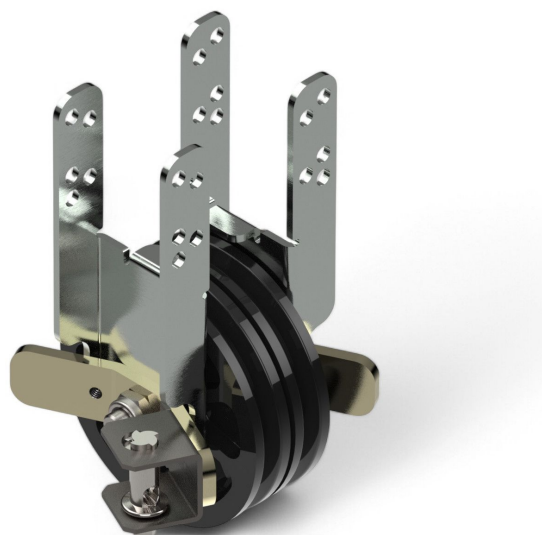
Systems divider cable pulley 100 50 x 50 - with wire tightener compact version

Product number: 25250090

Options

Version

With wire tightener compact



Image





TGU GmbH & Co. KG
Joseph-Monier-Str. 2
48268 Greven
Deutschland

Kontakt:
Telefon: +49 2575/95587-
15
Fax: +49 2575/95587-87
E-Mail: info@tgu-shop.com

Rechtliches:
Amtsgericht Ibbenbüren
USt-ID-Nr.:
DE 125543036

Description

- **Application:** Parallel redirection of two cords in large shading systems
- **Material:** Pulleys: impact-resistant plastic - Bracket and wire tightener: galvanized steel
- **Installation:** Two 100 mm pulleys mounted side by side - wire tighteners stabilize the axle under load
- **Special feature:** Ideal for adjoining large shading systems

The **Systems Divider Cable Pulley 100 50×50 - With Wire Tightener Compact Version** is designed for parallel redirection of two cords in greenhouse shading systems. The attached wire tighteners reinforce the axle under load, making it especially suitable for large installations with adjacent structures. Its durable materials ensure long-term reliability and resistance to environmental stress.