



TGU GmbH & Co. KG
Joseph-Monier-Str. 2
48268 Greven
Deutschland

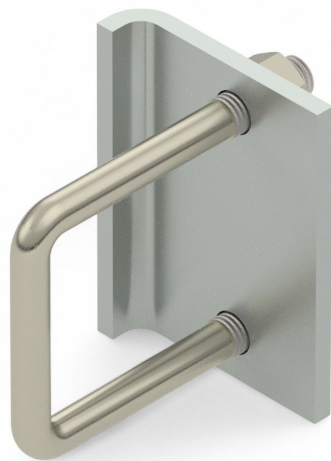
Kontakt:
Telefon: +49 2575/95587-
15
Fax: +49 2575/95587-87
E-Mail: info@tgu-shop.com

Rechtliches:
Amtsgericht Ibbenbüren
USt-ID-Nr.:
DE 125543036

Overview

Mounting bracket square tube 50 x50 on I beams + angles - PU = 20 pcs

Product number: 38020643



Erstellt am 21.04.2026.

Dieses Dokument stellt kein Angebot da. Es gelten die aktuellen Preise im Online-Shop.

All prices excl. VAT plus shipping costs and possible delivery charges, if not stated otherwise.



TGU GmbH & Co. KG
Joseph-Monier-Str. 2
48268 Greven
Deutschland

Kontakt:
Telefon: +49 2575/95587-
15
Fax: +49 2575/95587-87
E-Mail: info@tgu-shop.com

Rechtliches:
Amtsgericht Ibbenbüren
USt-ID-Nr.:
DE 125543036

Description

- **Application:** Mounts 50×50 mm square tubes to double IP steel beams
- **Material:** Galvanized steel
- **Components:** Includes pre-mounted brackets, plates, and screws
- **Installation:** Bolt-on — no welding required
- **Packaging unit:** 20 pieces (10 complete sets)

The **Mounting bracket square tube 50×50 on I-beams + angles** provides a stable, weld-free solution for attaching square tubes to IP steel beams in greenhouse structures. Supplied as pre-mounted sets for fast and secure installation.