



TGU GmbH & Co. KG  
Joseph-Monier-Str. 2  
48268 Greven  
Deutschland

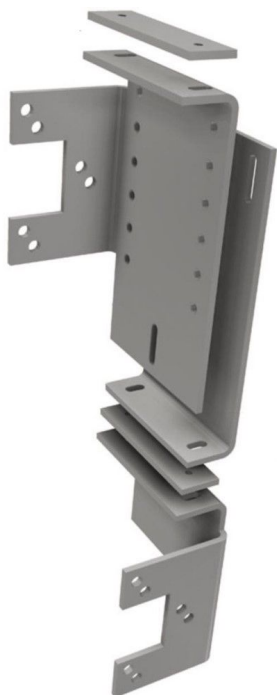
Kontakt:  
Telefon: +49 2575/95587-  
15  
Fax: +49 2575/95587-87  
E-Mail: info@tgu-shop.com

Rechtliches:  
Amtsgericht Ibbenbüren  
USt-ID-Nr.:  
DE 125543036

## Overview

# Ridder Mounting plate RSD\105\E\H340-495 - for motor gearbox RW240/400/600-RSD250 - von 340-495 mm

Product number: 32050501



Erstellt am 20.04.2026.

Dieses Dokument stellt kein Angebot da. Es gelten die aktuellen Preise im Online-Shop.

All prices excl. VAT plus shipping costs and possible delivery charges, if not stated otherwise.



TGU GmbH & Co. KG  
Joseph-Monier-Str. 2  
48268 Greven  
Deutschland

Kontakt:  
Telefon: +49 2575/95587-  
15  
Fax: +49 2575/95587-87  
E-Mail: info@tgu-shop.com

Rechtliches:  
Amtsgericht Ibbenbüren  
USt-ID-Nr.:  
DE 125543036

## Description

- **Application:** Mounting gear motors between greenhouse trusses
- **Material:** Galvanized steel
- **Height range:** Adjustable from 340 to 495 mm
- **Compatibility:** RW 240, RW 400, RW 600 motors
- **Mounting:** Variable hole pattern for flexible installation
- **Use case:** Suitable for central or gable-mounted drive systems
- **Ridder Article No.:** 503500

The **Mounting Plate RSD 105 E H340-495** allows flexible installation of Ridder gear motors between greenhouse trusses. Its adjustable height and variable hole pattern make it ideal for both central and gable-mounted systems. Built from galvanized steel for durability in greenhouse environments.