



TGU GmbH & Co. KG  
Joseph-Monier-Str. 2  
48268 Greven  
Deutschland

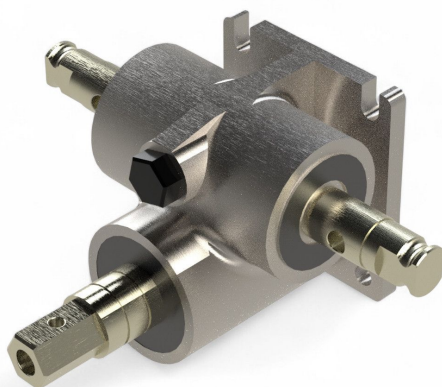
Kontakt:  
Telefon: +49 2575/95587-  
15  
Fax: +49 2575/95587-87  
E-Mail: info@tgu-shop.com

Rechtliches:  
Amtsgericht Ibbenbüren  
USt-ID-Nr.:  
DE 125543036

## Overview

# Manual Gear R17E-TGU for small application - with locking device - 1:16

Product number: 25000501



Kurbel nicht  
enthalten  
Crank not  
included

Erstellt am 21.04.2026.

Dieses Dokument stellt kein Angebot da. Es gelten die aktuellen Preise im Online-Shop.

All prices excl. VAT plus shipping costs and possible delivery charges, if not stated otherwise.



TGU GmbH & Co. KG  
Joseph-Monier-Str. 2  
48268 Greven  
Deutschland

Kontakt:  
Telefon: +49 2575/95587-  
15  
Fax: +49 2575/95587-87  
E-Mail: info@tgu-shop.com

Rechtliches:  
Amtsgericht Ibbenbüren  
USt-ID-Nr.:  
DE 125543036

## Description

- **Application:** Manual drive for small shading and ventilation systems
- **Material:** Sturdy construction with integrated coupling
- **Gear ratio:** 1:16
- **Function:** Directly mountable to TGU telescopic shafts or drive shafts
- **Feature:** Supplied with matching hand crank - optional extended crank or hook for elevated drives

The **Manual Drive R17E-TGU** is ideal for operating small greenhouse shading and ventilation systems. It features an integrated coupling for direct connection to TGU telescopic or standard drive shafts.

Delivered with a standard hand crank, it can also be equipped with an extended crank or hook for convenient operation of high-mounted drives. When combined with a chain wheel, even elevated installations can be easily controlled.