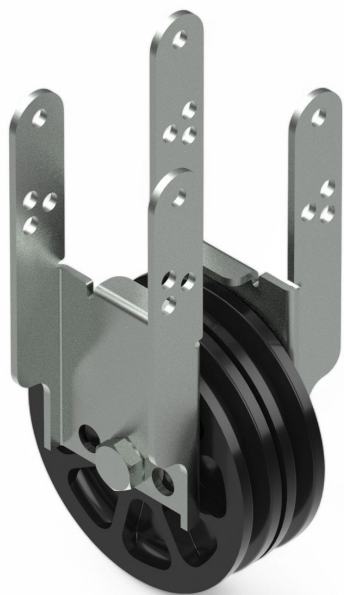


## Overview

# Systems divider cable pulley 100 60 x 60 - without wire tightener compact version

**Product number:** 25250086



### Options

#### Version

With wire tightener compact

without wire tightener compact

Image



TGU GmbH & Co. KG  
Joseph-Monier-Str. 2  
48268 Greven  
Deutschland

Kontakt:  
Telefon: +49 2575/95587-  
15  
Fax: +49 2575/95587-87  
E-Mail: info@tgu-shop.com

Rechtliches:  
Amtsgericht Ibbenbüren  
USt-ID-Nr.:  
DE 125543036

## Description

- **Application:** Parallel redirection of two cords in large shading systems
- **Material:** Pulleys: impact-resistant plastic - Bracket: galvanized steel
- **Installation:** Two 100 mm pulleys mounted side by side - wire tensioners stabilize the axle under load
- **Special feature:** Ideal for adjoining large shading systems

The **Systems Divider Cable Pulley 100 60×60 - Without Wire Tightener Compact Version** is designed for parallel redirection of two cords in greenhouse shading systems. The two 100 mm pulleys are screwed side by side and allow same-lane cable guidance. The bracket stabilizes the axle under tensile load. This version does not include wire tensioners and is especially suitable for large adjacent shading systems.