

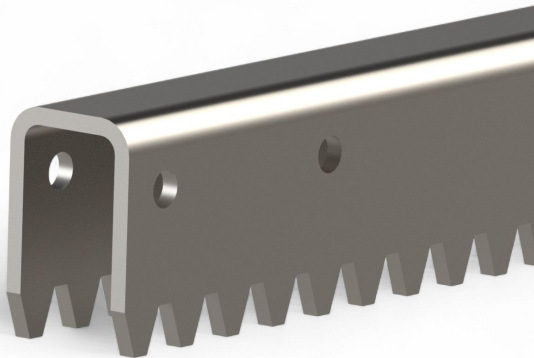
Overview

Rack H40-3\L2941 mm \ Ridder RSD250 and TU21- 40

Product number: 32102959

Options

Length (mm)





TGU GmbH & Co. KG
Joseph-Monier-Str. 2
48268 Greven
Deutschland

Kontakt:
Telefon: +49 2575/95587-
15
Fax: +49 2575/95587-87
E-Mail: info@tgu-shop.com

Rechtliches:
Amtsgericht Ibbenbüren
USt-ID-Nr.:
DE 125543036

Description

- **Application:** Drives for push-pull shading systems in greenhouses
- **Material:** Galvanized steel
- **Length:** 2941 mm
- **Compatibility:** Ridder RSD250 and TU21-40 pinion housings
- **Ridder Article No.:** 413949

The **Rack H40-3 / L2941 mm** is used to move push-pull tubes in greenhouse shading systems. It features continuous external toothing and a perforation for coupling. Designed for use with Ridder RSD250 and TU21-40 gear units.