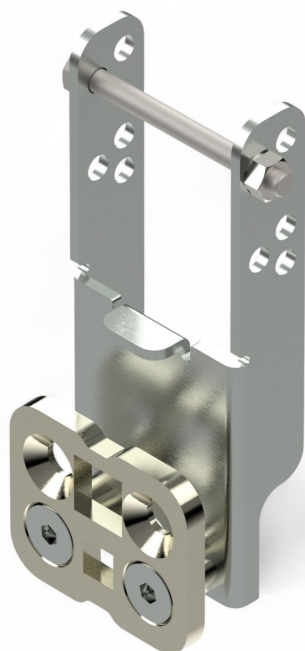


Overview

Tubular motor bracket 50.50 with insert 10x10 and 16x16 mm

Product number: 25250024





TGU GmbH & Co. KG
Joseph-Monier-Str. 2
48268 Greven
Deutschland

Kontakt:
Telefon: +49 2575/95587-
15
Fax: +49 2575/95587-87
E-Mail: info@tgu-shop.com

Rechtliches:
Amtsgericht Ibbenbüren
USt-ID-Nr.:
DE 125543036

Description

- **Application:** Shaft support for suspended shading systems with gable drive
- **Material:** Hot-dip galvanized steel for high stability and corrosion resistance
- **Installation:** Square tubes are flanged directly onto the bracket
- **Special feature:** Reversible plate compatible with all common tubular motors
- **Handling:** No manual alignment of the drive shaft required

The **Tubular Motor Bracket 50.50 with Insert 10×10 and 16×16 mm** positions the drive shaft precisely for the motor system and simplifies installation thanks to its intuitive handling. It is ideal for suspended shading systems with gable drive. The bracket is perfectly matched to 50 mm square tubes and only needs to be secured with a bolt and nut. Thanks to the reversible plate, it is compatible with all standard tubular motors.