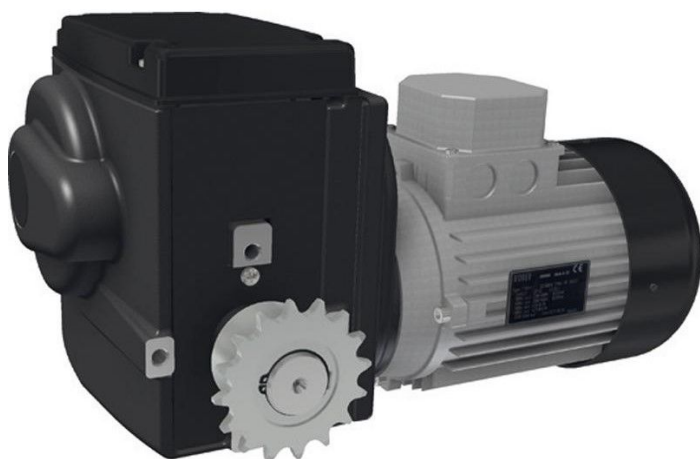


Overview

Motor gearbox RW605- 110\400\3\86 - Art.-Nr. 502420

Product number: 32435384





TGU GmbH & Co. KG
Joseph-Monier-Str. 2
48268 Greven
Deutschland

Kontakt:
Telefon: +49 2575/95587-
15
Fax: +49 2575/95587-87
E-Mail: info@tgu-shop.com

Rechtliches:
Amtsgericht Ibbenbüren
USt-ID-Nr.:
DE 125543036

Description

- **Application:** High-torque drive for large-scale greenhouse systems
- **Voltage:** 400 V, 3-phase
- **Speed:** 110 rpm
- **Protection class:** IP55 – sealed housing with linear limit switch system
- **End switch:** Built-in linear system with operating and safety switches (max. 86 turns)
- **Features:** Self-locking worm gear, quiet operation, graphite-grey powder coating
- **Optional:** RPU PositioningUnit or potentiometer feedback kit
- **Ridder Article No.:** 502420

The **RW605-110 motor gearbox** is engineered for heavy-duty greenhouse applications. It offers high torque, precise control, and long service life in harsh environments.