



TGU GmbH & Co. KG  
Joseph-Monier-Str. 2  
48268 Greven  
Deutschland

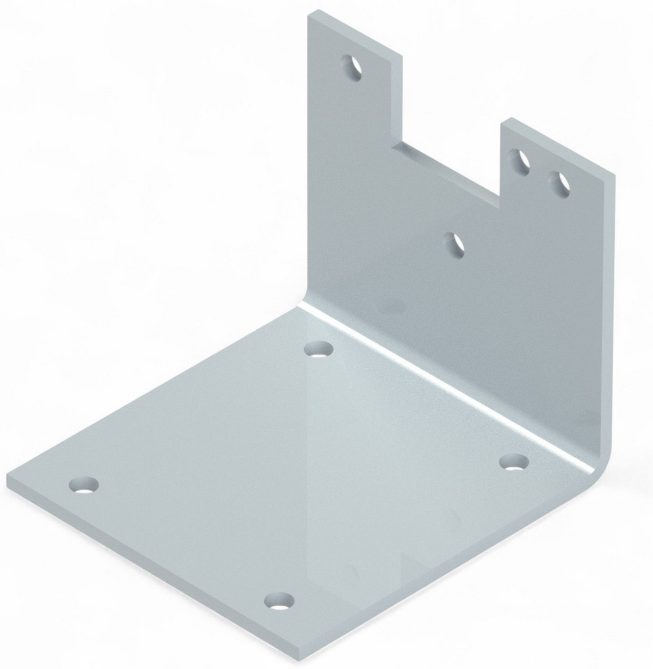
Kontakt:  
Telefon: +49 2575/95587-  
15  
Fax: +49 2575/95587-87  
E-Mail: info@tgu-shop.com

Rechtliches:  
Amtsgericht Ibbenbüren  
USt-ID-Nr.:  
DE 125543036

## Overview

# Mounting plate 85- 105/H120 / 417643

**Product number:** 32111204



Erstellt am 20.04.2026.

Dieses Dokument stellt kein Angebot da. Es gelten die aktuellen Preise im Online-Shop.

All prices excl. VAT plus shipping costs and possible delivery charges, if not stated otherwise.



TGU GmbH & Co. KG  
Joseph-Monier-Str. 2  
48268 Greven  
Deutschland

Kontakt:  
Telefon: +49 2575/95587-  
15  
Fax: +49 2575/95587-87  
E-Mail: info@tgu-shop.com

Rechtliches:  
Amtsgericht Ibbenbüren  
USt-ID-Nr.:  
DE 125543036

## Description

- **Application:** Angled mounting plate for RW45, RW240, RW400, RW600, and RAL120/90/60/240 gear motors
- **Material:** Galvanized steel
- **Mounting:** Bolt-on or weld-on installation
- **Height:** 120 mm
- **Special feature:** Custom lengths available on request
- **Ridder Article No.:** 417643

The **Mounting Plate 85-105 H120** is a robust angled bracket for a wide range of Ridder gear motors. Its corrosion-resistant finish and flexible mounting options make it ideal for greenhouse installations requiring elevated motor positioning.