

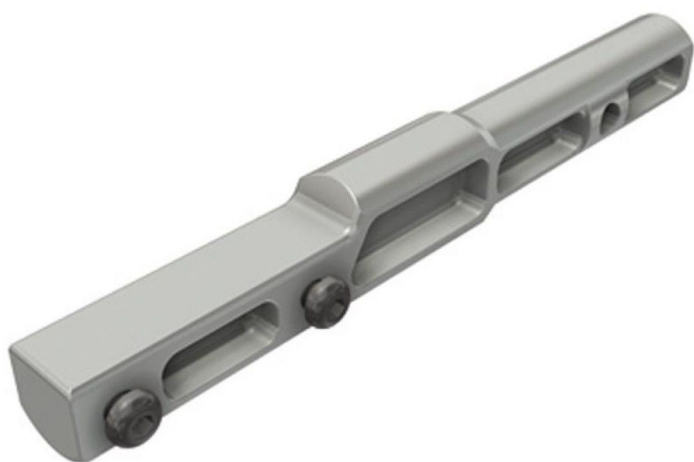
Overview

Ridder coupling unit PH40\B32x1.5\ST - to connect rack PH 40-3 with push-pull tube d. 32 mm

Product number: 32300099

Options

Size Ø

 27 32



TGU GmbH & Co. KG
Joseph-Monier-Str. 2
48268 Greven
Deutschland

Kontakt:
Telefon: +49 2575/95587-
15
Fax: +49 2575/95587-87
E-Mail: info@tgu-shop.com

Rechtliches:
Amtsgericht Ibbenbüren
USt-ID-Nr.:
DE 125543036

Description

- **Application:** Coupling unit for connecting rack PH 40-3 to Ø 32 mm push-pull tubes in shading systems
- **Material:** Zinc die-cast, galvanized
- **Rack compatibility:** PH 40-3
- **Tube compatibility:** Ø 32 mm push-pull tube
- **Ridder Article No.:** 500209

The **Coupling unit PH40 B32x1.5 ST** connects Ridder rack PH 40-3 to a 32 mm push-pull tube. Made of galvanized zinc die-cast, it ensures a secure and corrosion-resistant connection in greenhouse shading systems.