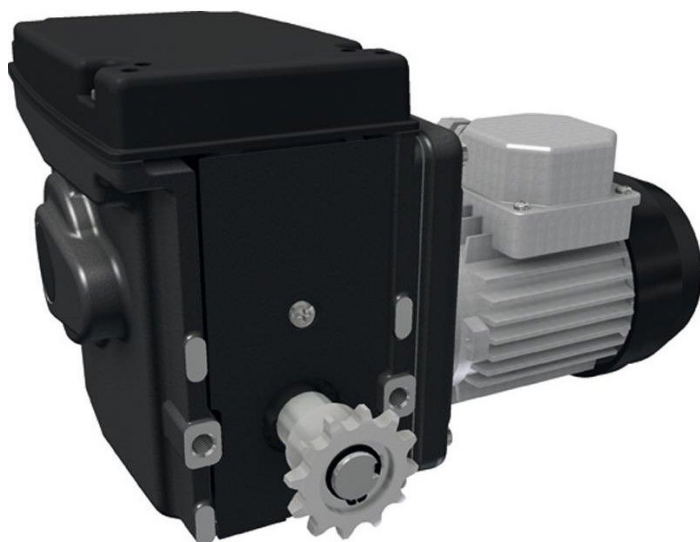


Overview

Motor gearbox Ridder RW 45-5\400-450 Volt

Product number: 32035220





TGU GmbH & Co. KG
Joseph-Monier-Str. 2
48268 Greven
Deutschland

Kontakt:
Telefon: +49 2575/95587-15
Fax: +49 2575/95587-87
E-Mail: info@tgu-shop.com

Rechtliches:
Amtsgericht Ibbenbüren
USt-ID-Nr.:
DE 125543036

Description

- **Application:** Drive unit for ventilation and screen systems in greenhouses or barns
- **Voltage:** 400-450 V, 3~, 50 Hz
- **Speed:** 5 rpm
- **Limit switch:** Integrated linear limit switch system with a 97-turn operating range
- **Features:**
 - Self-locking worm gear for secure shaft position at standstill
 - Quiet operation due to optimized gear combinations
 - Maintenance-free and compact design
 - Optional RPU PositioningUnit or potentiometer feedback
 - Graphite-grey powder coating
- **Ridder Article No.:** 502020

The **RW45-5 / 400-450 V** is a powerful and compact gear motor for greenhouse ventilation and shading systems. It features a self-locking worm gear, precise limit switch control, and optional feedback integration for climate automation. Built for durability and quiet operation.

Product information

Drive shaft:	Chain coupling
Phase(s):	3
Revolutions per minute:	5
Torque (Nm):	60
Voltage (V):	400

Erstellt am 14.05.2026.

Dieses Dokument stellt kein Angebot da. Es gelten die aktuellen Preise im Online-Shop.

All prices excl. VAT plus shipping costs and possible delivery charges, if not stated otherwise.